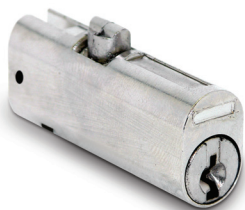
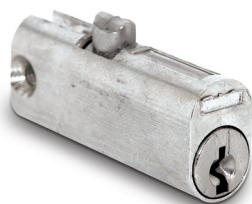


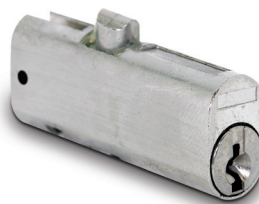
PUSH BUTTON FILE CABINET LOCKS



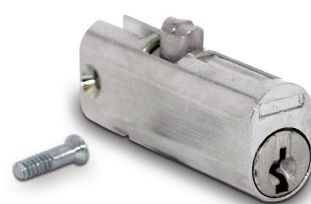
PTR-1750P312 | 1 3/4"
Rolling Pin Mounting ‡



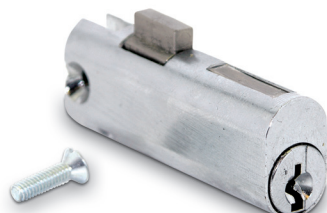
PTR-1750S312 | 1 3/4"
Machine Screw Mounting ‡



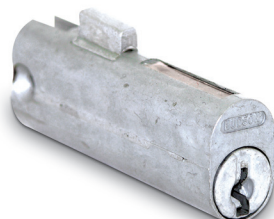
PTR-1750P500 | 1 3/4"
Rolling Pin Mounting ‡



PTR-1750S500 | 1 3/4"
Machine Screw Mounting ‡



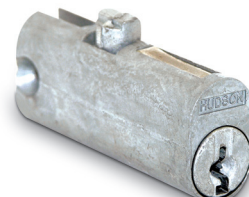
PTR-2000S344 | 2"
Machine Screw Mounting ‡



FC103 | 2"
Machine Screw Mounting ‡



FC5046 | 1 7/16"
Rear Mount Machine Screw Mounting ‡



FC6046 | 1 3/4"
Machine Screw Mounting ‡



FC6046B | 1 3/4"
Machine Screw Mounting ‡

Codes KA LL01-LL12 and KD 4 Pin Tumblers Cylinder

‡ Note: 312 series replacement for Hon Company. Equivalent to Chicago 5001LP

‡ Note: 500 series replacement for Anderson Hickey. Equivalent to Chicago 5001-50LP

‡ Note: 344 replacement for Hon Company. Equivalent to Chicago 5002-LP

