

XW2833 SPRING BOLT

KEY CHANGEABLE CORES - Key code may be changed readily by removing central core with special change key.

CYLINDER - Die cast. 7/8" diameter. Cylinder nickel plate finish unless otherwise specified. Special finishes furnished on request.

OPERATION - 45 degree key turn. Key withdrawing in the locked position only.

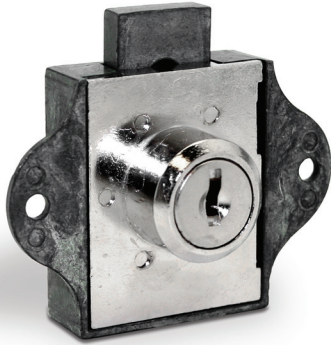
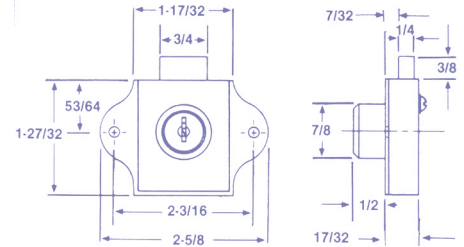
BOLT - 5/16" throw. Spring bolt.

MECHANISM - 5 disc tumblers

KEYS - Two single bitted brass keys per lock.

KEY CHANGES - Regularly furnished keyed alike. Keyed different available.

MASTER KEYED - Can be furnished with a number of different key changes master keyed.



XW2873 DEAD BOLT

KEY CHANGEABLE CORES - Key code may be changed readily by removing central core with special change key.

CYLINDER - Die cast. 7/8" diameter. Cylinder nickel plate finish unless otherwise specified. Special finishes furnished on request.

OPERATION - 180 degree key turn. Key withdrawing in both locked and unlocked positions.

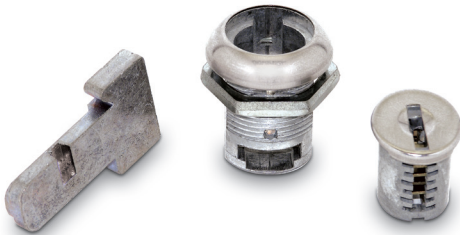
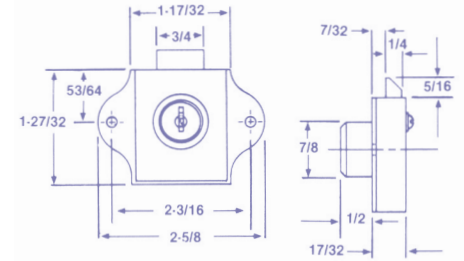
BOLT - 3/8" throw. Dead bolt.

MECHANISM - 5 disc tumblers

KEYS - Two single bitted brass keys per lock.

KEY CHANGES - Regularly furnished keyed alike. Keyed different available.

MASTER KEYED - Can be furnished with a number of different key changes master keyed.



METAL DESK DRAWER LOCKS

Available keyed alike, keyed different, and master keyed; the T585 can be ordered with the same key changes as ESP Cam Locks and Wood Desk Locks. Packaged 12 locks per carton. Uses ES-8 Keyway, 2 keys per lock. Operation: Key turns 180° clockwise moving T-bolt upwards. Key removable in both positions.