

CAM LOCKS

DISC TUMBLER

REMOVABLE; CAM BULK W/NUT
SPRING CLIP MOUNTING

RC STAKED

SIZES 11/32 & 7/16

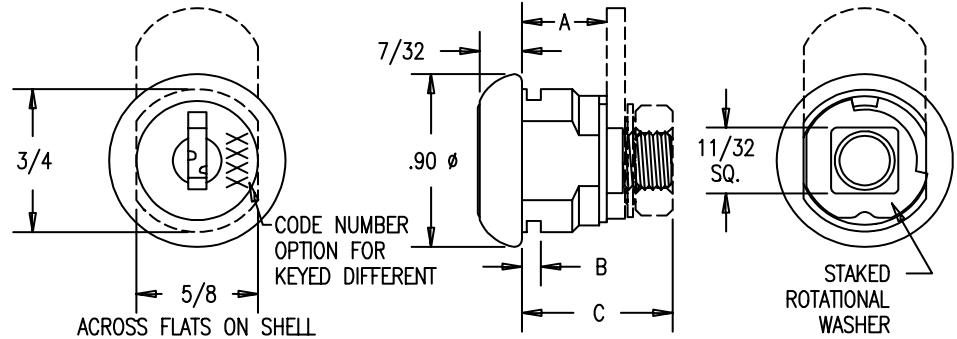
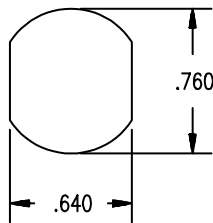
STATIONARY CORE

Tolerances .XXX ±.005 .XX ± .010 Fractions ± 1/64

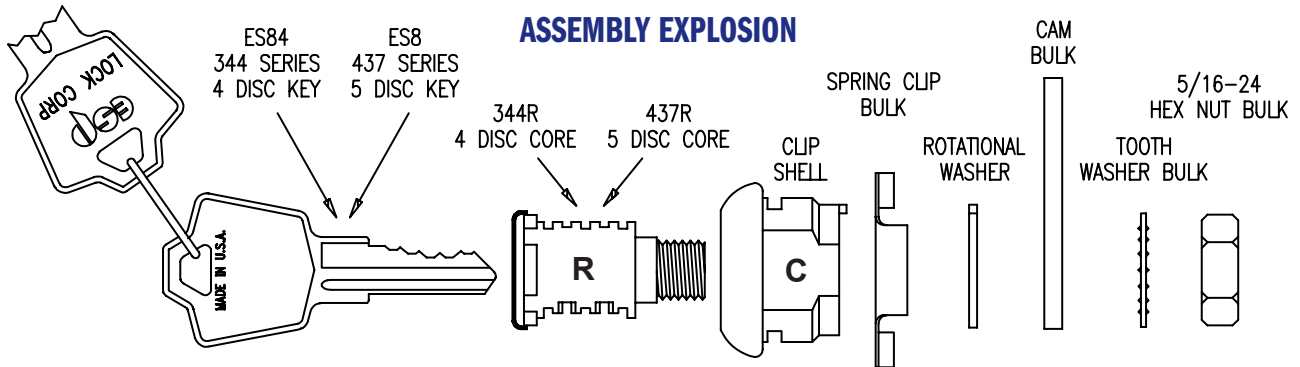
Metric: multiply decimal X 25.4 to obtain mm.

LOCK ASSEMBLED

MOUNTING HOLE
DETAIL



ASSEMBLY EXPLOSION



KEYING:

- Keyed alike, keyed different, master keyed.
- 2 brass keys, rung

OPERATION:

- Cam rotation 90° or 180° CW or CCW see cam information, pages 10-15
- Key is removable in locked position only or in locked and unlocked positions as specified. See rotation information, page 14-15

STANDARD LOCK:

- Stainless steel scalp on shell & core
- Gray Tri-chromate & zinc plate
- Cam is not assembled, shipped bulk
- Spring clip is shipped bulk

OPTIONS:

- Key number on face of core
- No scalp on core and shell
- Custom finishes on core and shell, see page 26

ACCESSORIES SEE PAGE 27-28

- Spur washer
- Cylinder ring
- Fasteners

APPLICATION: For ease of installing rotary cam locks if the assembled cam cannot enter the mounting hole. The staked lock eliminates cam disassembly.

SIZE CHART

CATALOG SERIES	SIZE "A"	TOTAL LENGTH FROM BEZEL "C"	KEY CUTS & DISC TUMBLERS
344RCSTK	11/32	11/16	4
437RCSTK	7/16	25/32	5

HOW TO ORDER:



Example: 344RCSTKF080 - 11/32", staked washer, spring clip mounting, 90° CCW rotation, 1 1/8" straight cam bulk, key removal in locked position only.

Also indicate keying, options, & accessories



CAM LOCKS

DISC TUMBLER

REMOVABLE CAM ASSEMBLY W/SEMS SPRING CLIP MOUNTING

RC ASSEMBLED

SIZES 5/8 - 1 7/16

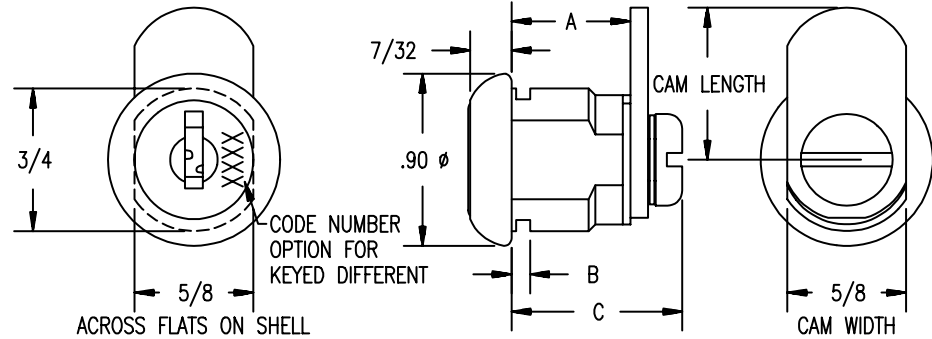
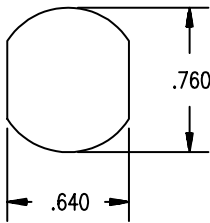
STATIONARY CORE

Tolerances .XXX ±.005 .XX ± .010 Fractions ± 1/64

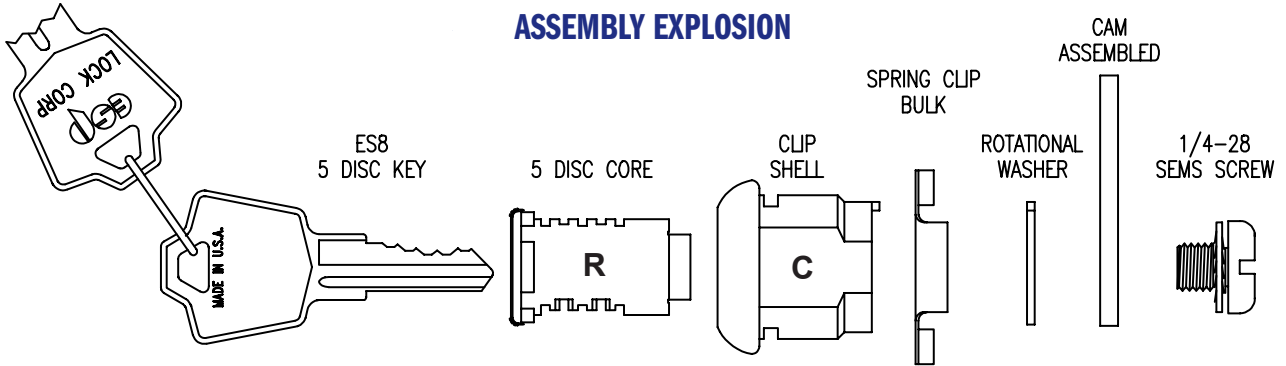
Metric: multiply decimal X 25.4 to obtain mm.

LOCK ASSEMBLED

MOUNTING HOLE
DETAIL



ASSEMBLY EXPLOSION



KEYING:

- Keyed alike, keyed different, master keyed.
- 2 brass keys, rung

APPLICATION: For locking with rotary cam travel; lock is shipped with cam attached, but can be removed at anytime for repositioning.

OPERATION:

- Cam rotation 90° or 180° CW or CCW see cam information, pages 10-15
- Key is removable in locked position only or in locked and unlocked positions as specified. See rotation information, page 14-15

SIZE CHART

CATALOG SERIES	SIZE "A"	TOTAL LENGTH FROM BEZEL "C"
625RC	5/8	29/32
875RC	7/16	1 5/32
1125RC	1 1/8	1 13/32
1375RC	1 3/8	1 21/32
1437RC	1 7/16	1 23/32

STANDARD LOCK:

- Stainless steel scalp on shell & core
- Gray Tri-chromate & zinc plate
- Cam is assembled to lock
- Spring clip is shipped bulk

OPTIONS:

- Key number on face of core
- No scalp on core and shell
- Custom finishes on core and shell, see page 26

ACCESSORIES SEE PAGE 27-28

- Spur washer
- Cylinder ring
- Fasteners

HOW TO ORDER:



Example: 1125RC150A - 1 1/8", removable cam, spring clip mounting, 2" straight cam, 90° CW rotation, key removable in locked and unlocked positions.

Also indicate keying, options, & accessories



CAM LOCKS

DISC TUMBLER

RN STAKED

REMOVABLE; CAM BULK W/NUT
HEX NUT MOUNTING

SIZES 11/32 & 7/16

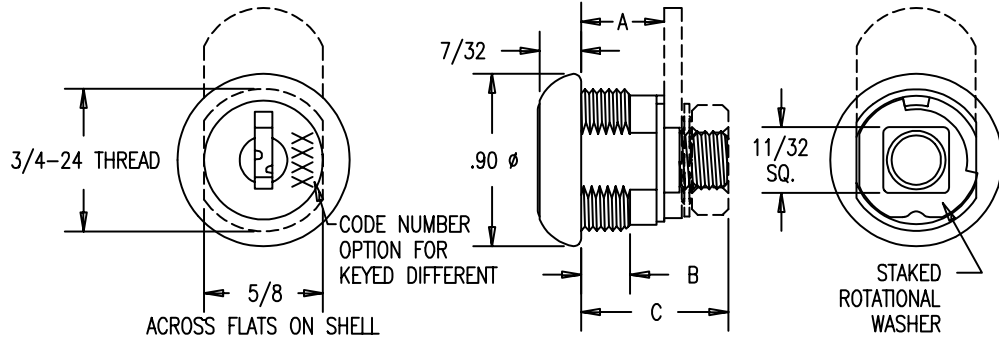
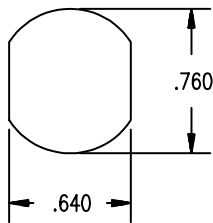
STATIONARY CORE

Tolerances .XXX ±.005 .XX ± .010 Fractions ± 1/64

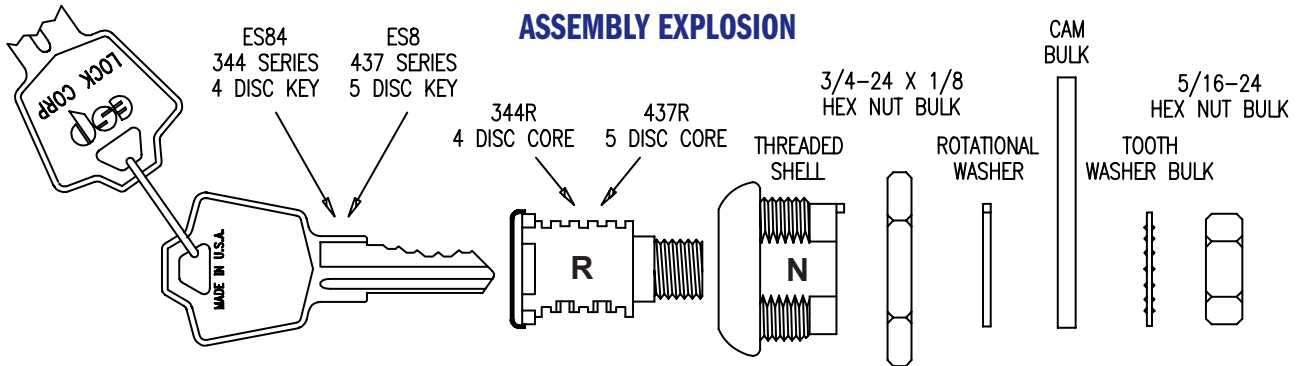
Metric: multiply decimal X 25.4 to obtain mm.

LOCK ASSEMBLED

MOUNTING HOLE
DETAIL



ASSEMBLY EXPLOSION



KEYING:

- Keyed alike, keyed different, master keyed.
- 2 brass keys, rung

OPERATION:

- Cam rotation 90° or 180° CW or CCW see cam information, pages 10-15
- Key is removable in locked position only or in locked and unlocked positions as specified. See rotation information, page 14-15

STANDARD LOCK:

- Stainless steel scalp on shell & core
- Gray Tri-chromate & zinc plate
- Cam is not assembled, shipped bulk
- Hex nut is shipped bulk

OPTIONS:

- Key number on face of core
- No scalp on core and shell
- Custom finishes on core and shell, see page 26

ACCESSORIES SEE PAGE 27-28

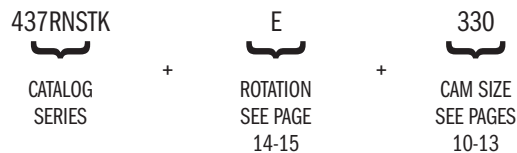
- Spur washer
- Cylinder ring
- Fasteners

APPLICATION: For ease of installing rotary cam locks if the assembled cam cannot enter the mounting hole. The staked lock eliminates cam disassembly.

SIZE CHART

CATALOG SERIES	SIZE "A"	SIZE "B"	TOTAL LENGTH FROM BEZEL "C"	KEY CUTS & DISC TUMBLERS
344RNSTK	11/32	1/4	11/16	4
437RNSTK	7/16	17/64	25/32	5

HOW TO ORDER:



Example: 437RNSTKE330 - 7/16", stacked washer, nut mounting, 90° CW rotation, 1" hook cam bulk, key removable in locked position only.

Also indicate keying, options, & accessories



CAM LOCKS

DISC TUMBLER

REMOVABLE; CAM BULK W/SEMS
HEX NUT MOUNTING

RN ASSEMBLED

SIZES 5/8 - 1 7/16

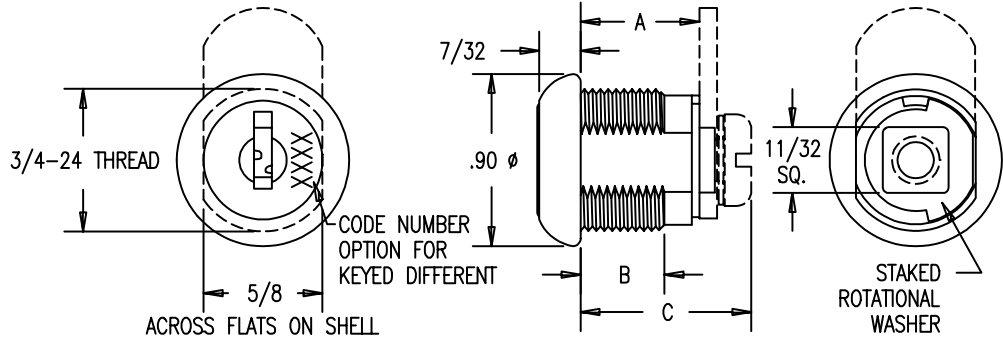
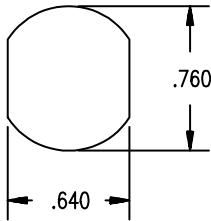
STATIONARY CORE

Tolerances .XXX ±.005 .XX ± .010 Fractions ± 1/64

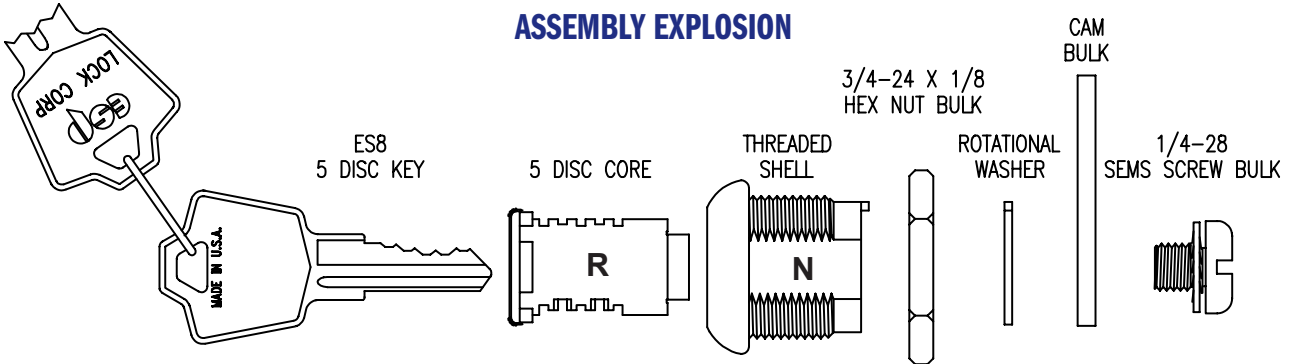
Metric: multiply decimal X 25.4 to obtain mm.

LOCK ASSEMBLED

MOUNTING HOLE
DETAIL



ASSEMBLY EXPLOSION



KEYING:

- Keyed alike, keyed different, master keyed.
- 2 brass keys, rung

OPERATION:

- Cam rotation 90° or 180° CW or CCW see cam information, pages 10-15
- Key is removable in locked position only or in locked and unlocked positions as specified. See rotation information, page 14-15

STANDARD LOCK:

- Stainless steel scalp on shell & core
- Gray Tri-chromate & zinc plate
- Cam is not assembled, shipped bulk
- Hex nut is shipped bulk

OPTIONS:

- Key number on face of core
- No scalp on core and shell
- Custom finishes on core and shell, see page 26
- Also available in RC (clip mount)

ACCESSORIES SEE PAGE 27-28

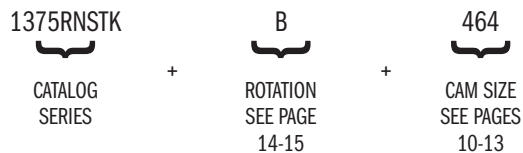
- Spur washer
- Cylinder ring
- Fasteners

APPLICATION: For ease of installing rotary cam locks if the assembled cam cannot enter the mounting hole. The staked lock eliminates cam disassembly.

SIZE CHART

CATALOG SERIES	SIZE "A"	THREAD LENGTH "B"	TOTAL LENGTH FROM BEZEL "C"
625RNSTK	5/8	7/16	29/32
875RNSTK	7/8	25/32	1 5/32
1125RNSTK	1 1/8	1 1/16	1 13/32
1375RNSTK	1 3/8	1 7/16	1 21/32
1437RNSTK	1 7/16	1 5/16	1 23/32

HOW TO ORDER:



Example: 1375RNSTKB464 - 1 3/8", staked washer, nut mounting, 180° CW rotation, 1/4" offset X 1 1/8" cam bulk, key removable in locked and unlocked positions

Also indicate keying, options, & accessories



CAM LOCKS

DISC TUMBLER

FIXED CAM ASSEMBLY HEX NUT MOUNTING

FN ASSEMBLED

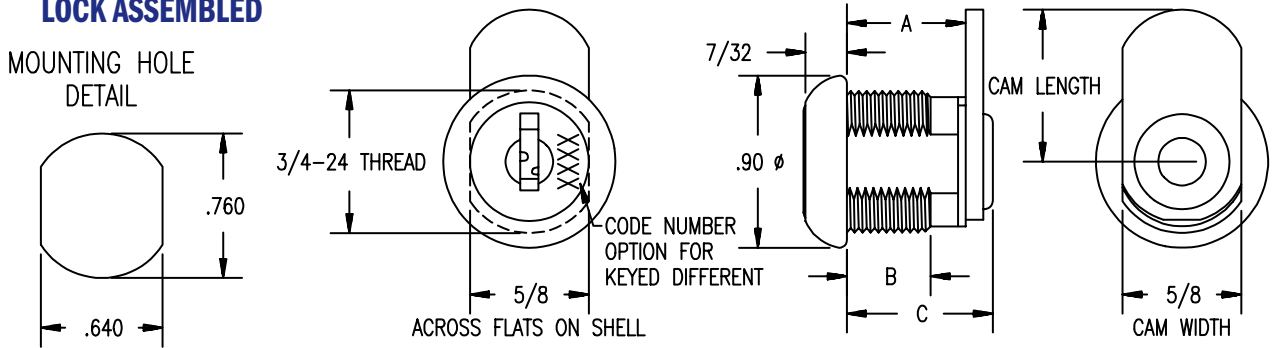
SIZES 11/32 - 1 1/8

STATIONARY CORE

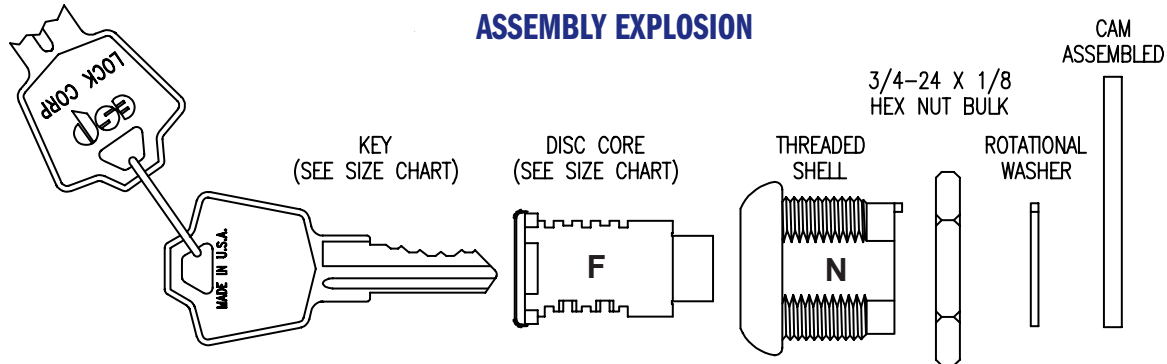
Tolerances .XXX ±.005 .XX ± .010 Fractions ± 1/64

Metric: multiply decimal X 25.4 to obtain mm.

LOCK ASSEMBLED



ASSEMBLY EXPLOSION



KEYING:

- Keyed alike, keyed different, master keyed.
- 2 brass keys, rung

OPERATION:

- Cam rotation 90° or 180° CW or CCW see cam information, pages 10-15
- Key is removable in locked position only or in locked and unlocked positions as specified. See rotation information, page 14-15

STANDARD LOCK:

- Stainless steel scalp on shell & core
- Gray Tri-chromate & zinc plate
- Cam is permanently attached
- Hex nut is shipped bulk

OPTIONS:

- Key number on face of core
- No scalp on core and shell
- Custom finishes on core and shell, see page 26

ACCESSORIES SEE PAGE 27-28

- Spur washer
- Cylinder ring
- Fasteners

APPLICATION: For locking with rotary cam travel, lock is shipped with cam permanently attached. The lock must enter the mounting hole in this condition.

SIZE CHART

CATALOG SERIES	SIZE "A"	THREAD LENGTH "B"	TOTAL LENGTH FROM BEZEL "C"	KEY CUTS & DISC TUMBLERS
344FN	11/32	1/4	31/64	4
437FN	7/16	17/64	37/64	5
625FN	5/8	7/16	49/64	5
875FN	7/8	25/32	1 1/64	5
1125FN	1 1/8	1 1/16	1 17/64	5

HOW TO ORDER:



Example: 625FN550G - 5/8", fixed cam, nut mounting, 3/16" offset X 1 1/2" cam bent out, 90° CW rotation key removable in locked and unlocked positions. Also indicate keying, options, & accessories



CAM LOCKS

DISC TUMBLER

REMOVABLE CAM ASSEMBLY SPRING CLIP MOUNTING

FC ASSEMBLED

SIZES 11/32 - 1 1/8

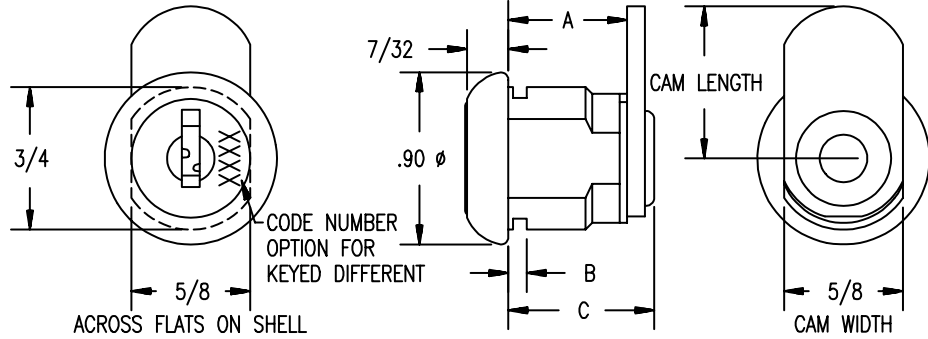
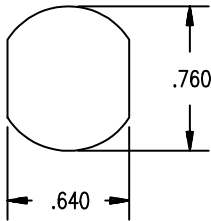
STATIONARY CORE

Tolerances .XXX ±.005 .XX ± .010 Fractions ± 1/64

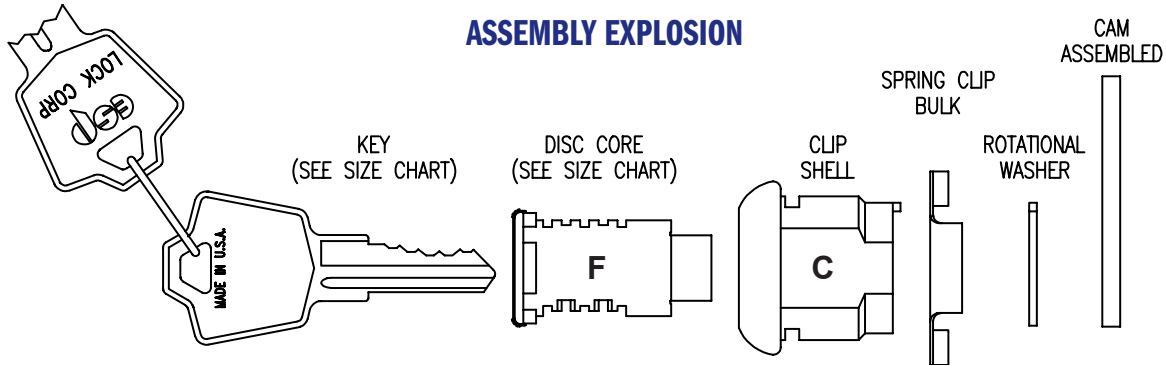
Metric: multiply decimal X 25.4 to obtain mm.

LOCK ASSEMBLED

MOUNTING HOLE
DETAIL



ASSEMBLY EXPLOSION



KEYING:

- Keyed alike, keyed different, master keyed.
- 2 brass keys, rung

APPLICATION: For locking with rotary cam travel, lock is shipped with cam permanently attached. The lock must enter the mounting hole in this condition.

OPERATION:

- Cam rotation 90° or 180° CW or CCW see cam information, pages 10-15
- Key is removable in locked position only or in locked and unlocked positions as specified. See rotation information, page 14-15

SIZE CHART

CATALOG SERIES	SIZE "A"	TOTAL LENGTH FROM BEZEL "C"	KEY CUTS & DISC TUMBLERS
344FC	11/32	31/64	4
437FC	7/16	37/64	5
625FC	5/8	49/64	5
875FC	7/8	1 1/64	5
1125FC	1 1/8	1 17/64	5

STANDARD LOCK:

- Stainless steel scalp on shell & core
- Gray Tri-chromate & zinc plate
- Cam is permanently attached
- Spring clip is shipped bulk

OPTIONS:

- Key number on face of core
- No scalp on core and shell
- Custom finishes on core and shell, see page 26
- Also available in RC (clip mount)

HOW TO ORDER:

437FC



CATALOG SERIES

+

484



CAM SIZE
SEE PAGES
10-13

+

K



ROTATION SEE
PAGE
14-15

ACCESSORIES SEE PAGE 27-28

- Spur washer
- Cylinder ring

Example: 437FCC484K - 7/16" fixed cam, spring clip mounting, 3/8" offset X 1 1/8" cam bent in, 180° CCW rotation, key removable in locked and unlocked positions. Also indicate keying, options, & accessories



Manufacturer can substitute alternate equivalent. 1-800-434-8960

CAM LOCKS

DISC TUMBLER

DUST COVER VERSION FOR WEATHER SHIELDING

DC ASSEMBLED & STAKED

SIZES 7/16 & 1 3/8

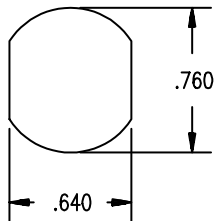
STATIONARY CORE

Tolerances .XXX ±.005 .XX ± .010 Fractions ± 1/64

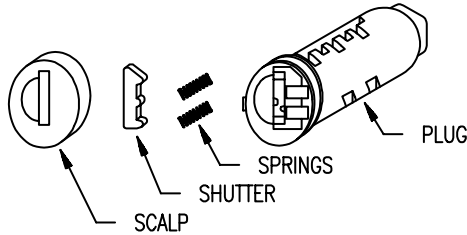
Metric: multiply decimal X 25.4 to obtain mm.

SPECIFICATIONS

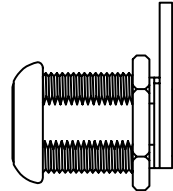
MOUNTING HOLE DETAIL



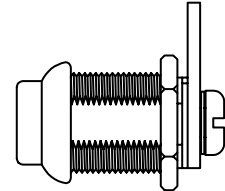
ASSEMBLY EXPLOSION



FACE FLUSH



FACE PROTRUSION



APPLICATION:

For outdoor use, protecting the lock from weather conditions. Mounting dimensions and functions are the same as cam locks.

KEYING:

- 5 disc tumblers
- Keyed alike, keyed different, master keyed.
- 2 brass keys, rung

OPERATION:

- Cam rotation 90° or 180° CW or CCW, see cam information, pages 10-15
- Key is removable in locked position only or in locked and unlocked positions as specified. See rotation information, page 14-15

STANDARD LOCK:

- Stainless steel scalp on shell & core
- Gray tri-chromate & bright nickel
- Cam assembled RN, RC, FN, FC
- Cam bulk RNSTK, RCSTK
- Hex nut or spring clip shipped bulk

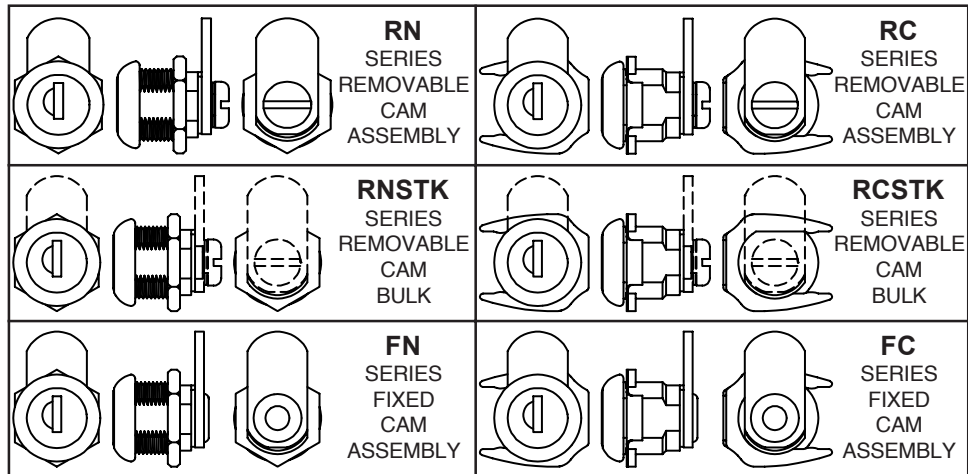
OPTIONS

- Key number on face of core
- Custom finishes on lock body, see page 26

ACCESSORIES SEE PAGE 27-28

- Spur washer
- Cylinder ring

DUST COVER ASSEMBLIES



SIZE CHART

SIZE	CATALOG SERIES	ASSEMBLY OPTION						FACE OPTION	
		RN	RC	RNSTK	RCSTK	RN	FC	FLUSH	PROTRUSION
7/16	DC437	RN	RC	RNSTK	RCSTK	RN	FC	NO	YES
5/8	DC625	RN	RC	RNSTK	RCSTK	RN	FC	YES	YES
7/8	DC875	RN	RC	RNSTK	RCSTK	RN	FC	NO	YES
1 1/8	DC1125	RN	RC	RNSTK	RCSTK	RN	FC	NO	YES

HOW TO ORDER:



Example: DC625FN040L - 5/8" dust cover, fixed cam, nut mounting, 5/8" straight cam, 90° CW rotation, key removable in locked position only.

Also indicate keying, options, & accessories



MAGNUM CAM LOCKS

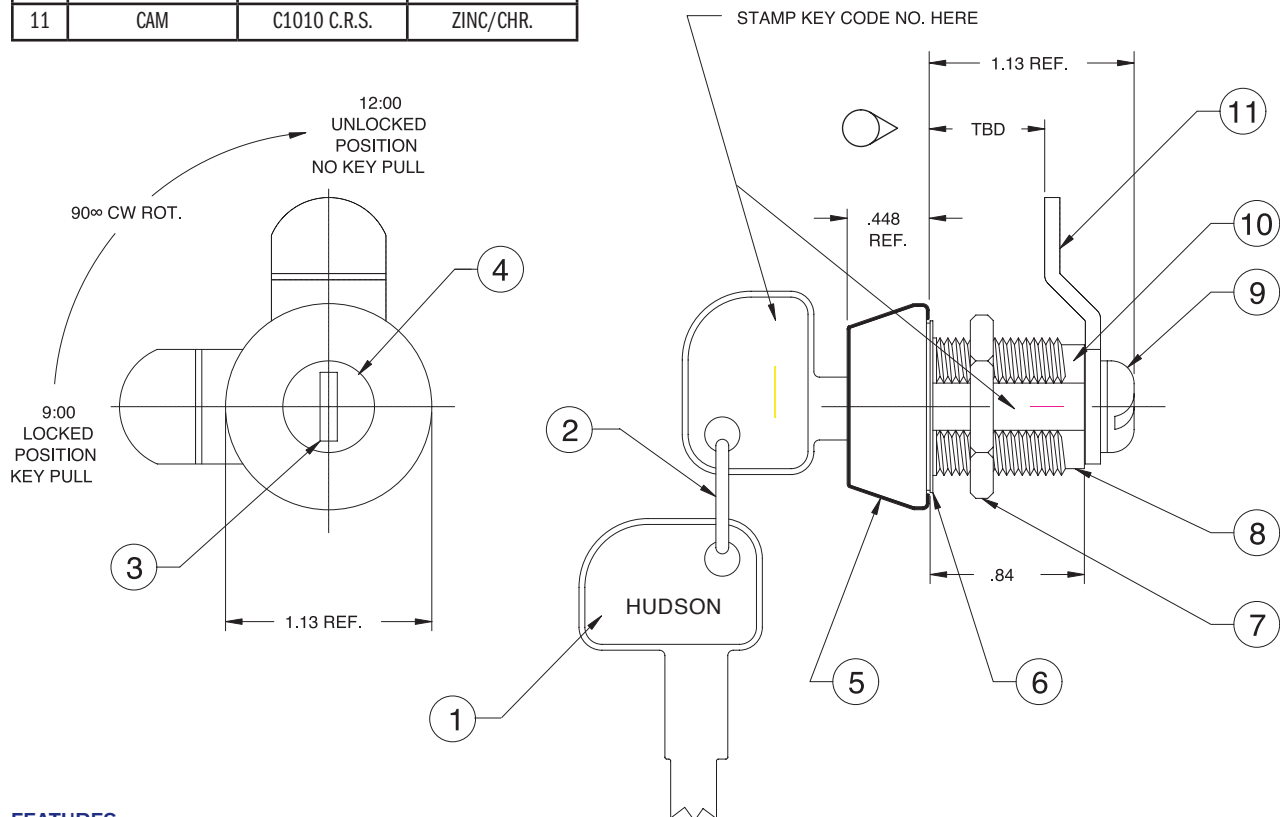
FOR EXTREME OUTDOOR LOCATIONS

ITEM	DESC.	MATERIAL	FINISH
1	KEY	BRASS	LACQUER
2	KEY RING	SPR. WIRE	NONE
3	PLUG	ZAMAC #3	0400
4	SHUTTER ASSY	302 STAIN	302 ST. STL
5	SHELL SCALP	302 STAIN	302 ST. STL
6	RUBBER WASH.	RUBBER	NONE
7	HEX NUT	STEEL	ZINC
8	SHELL	ZAMAC #3	0101
9	SEMS SCREW	STEEL	ZINC
10	"O" RING	RUBBER	NONE
11	CAM	C1010 C.R.S.	ZINC/CHR.

HOW TO ORDER:

3325 **070** **E**
 CATALOG + CAM SIZE + ROTATION
 SERIES SEE PAGES SEE PAGES
 10-13 14-15

Example: 3325070E - removable cam, nut mounting, 1" straight cam, 90° CW rotation, key removable in locked position only
 Also indicate keying, options, & accessories



FEATURES:

- 1) Automotive 302 s.s. dust shutter
- 2) 1000 codes available
- 3) 6 wafer including anti pick in first position
- 4) Passes ASTM E331 water ingress test
- 5) Passes SAE J726 resistance to dust ingress test
- 6) Passes 1000 hours of salt spray per ASTM B117
- 7) Choose cam from pages 10-13
- 8) Choose E, L, S, or Y rotation from page 14-15



CAMS

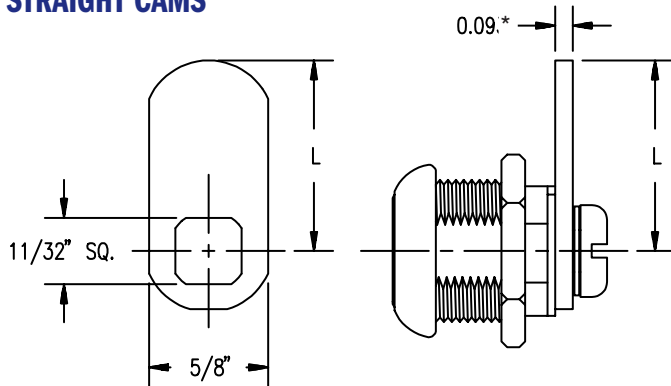
DISC TUMBLER CAM LOCKS STRAIGHT, HOOK & 90° L-BEND

Tolerances .XXX ±.005 .XX ± .010 Fractions ± 1/64

Metric: multiply decimal X 25.4 to obtain mm.

For special purpose or custom cams not illustrated in the catalog, please call for assistance. Our engineering staff is available for consultation and design of any cam forms according to your required specifications.

STRAIGHT CAMS



CAM NO.	"L" DIM.	CAM NO.	"L" DIM.
155	9/16	055	1 9/16
160	5/8	060	1 5/8
165	11/16	065	1 11/16
170	3/4	070	1 3/4
175	13/16	075	1 13/16
180	7/8	080	1 7/8
185	15/16	085	1 15/16
010	1	090	2
015	1 1/16	095	2 1/16
020	1 1/8	100	2 1/8
025	1 3/16	105	2 3/16
030	1 1/4	110	2 1/4
035	1 5/16	115	2 5/16
040	1 3/8	120	2 3/8
045	1 7/16	125	2 7/16
050	1 1/2	130	2 1/2

Special cam material thicknesses available on request.

*Also available in 0.12 thick

HOOK CAMS

HOOK RIGHT

"H" DIM.	CAM NO.	"H" DIM.	CAM NO.
5/8	200	1 1/4	210
11/16	201	1 5/16	211
3/4	202	1 3/8	212
13/16	203	1 7/16	213
7/8	204	1 1/2	214
15/16	205	1 9/16	215
1	206	1 5/8	216
1 1/16	207	1 11/16	217
1 1/8	208	1 3/4	218
1 3/16	209		

Rotations available:

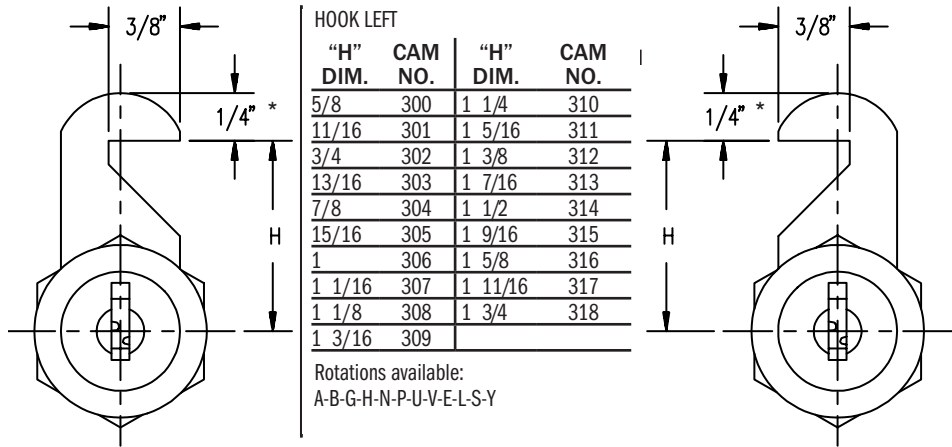
C-D-J-L-Q-R-W-X-F-T-M-Z

HOOK LEFT

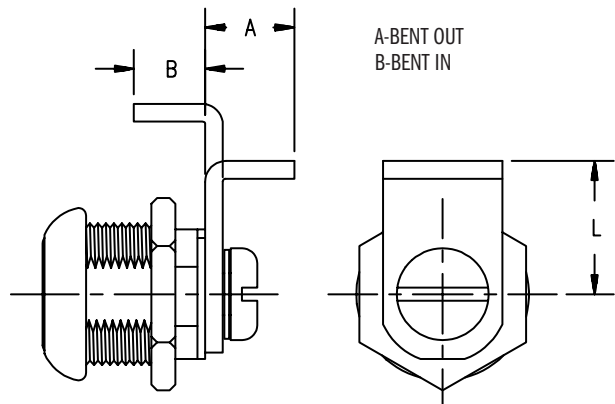
"H" DIM.	CAM NO.	"H" DIM.	CAM NO.
5/8	300	1 1/4	310
11/16	301	1 5/16	311
3/4	302	1 3/8	312
13/16	303	1 7/16	313
7/8	304	1 1/2	314
15/16	305	1 9/16	315
1	306	1 5/8	316
1 1/16	307	1 11/16	317
1 1/8	308	1 3/4	318
1 3/16	309		

Rotations available:

A-B-G-H-N-P-U-V-E-L-S-Y



BENT CAMS 90°



A-BENT OUT
B-BENT IN

"A" Dimension - for bent out cams, backside of cam to end of bend.

"B" Dimension - for bent in cams, inside of cam to end of bend.

"L" Dimension - from center of lock to bend of cam.

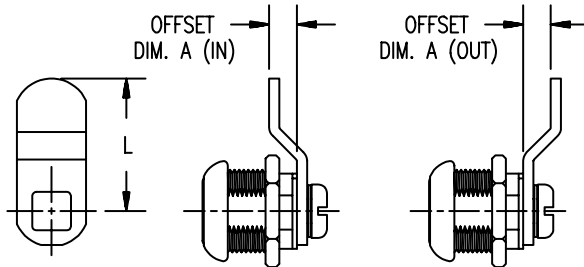


CAMS

DISC TUMBLER CAM LOCKS 45° OFFSET & 45° OFFSET HOOK

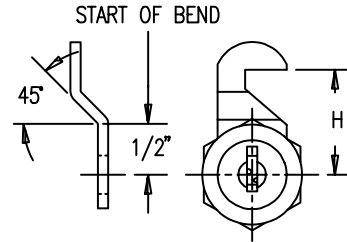
For special purpose or custom cams not illustrated in the catalog, please call for assistance. Our engineering staff is available for consultation and design of any cam forms according to your required specifications.

OFFSET CAMS



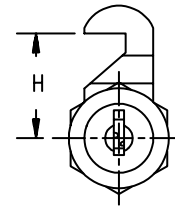
All rotations available

HOOK RIGHT



Rotations available:
C-D-J-K-Q-R-W-X-F-T-M-Z

HOOK LEFT



Rotations available:
A-B-G-H-N-P-U-V-E-L-S-Y

OFFSET DIM. A	"L" DIM.	IN	OUT	H DIM.	IN	OUT	IN	OUT
1/16"	7/8	400	500					
	15/16	401	501	11/16	601	701	801	901
	1	402	502	3/4	602	702	802	902
	1-1/16	403	503	13/16	603	703	803	903
	1-1/8	404	504	7/8	604	704	804	904
	1-3/16	405	505	15/16	605	705	805	905
	1-1/4	406	506	1	606	706	806	906
	1-5/16	407	507	1-1/16	607	707	807	907
	1-3/8	408	508	1-1/8	608	708	808	908
	1-7/16	409	509	1-3/16	609	709	809	909
	1-1/2	410	510	1-1/4	610	710	810	910
	1-9/16	411	511	1-5/16	611	711	811	911
	1-5/8	412	512	1-3/8	612	712	812	912
	1-11/16	413	513	1-7/16	613	713	813	913
	1-3/4	414	514	1-1/2	614	714	814	914
	1-13/16	415	515	1-9/16	615	715	815	915
	1-7/8	416	516	1-5/8	616	716	816	916
	1-15/16	417	517	1-11/16	617	717	817	917
2	418	518	1-3/4	618	718	818	918	
1/8"	7/8	420	520					
	15/16	421	521					
	1	422	522	3/4	622	722	822	922
	1-1/16	423	523	13/16	623	723	823	923
	1-1/8	424	524	7/8	624	724	824	924
	1-3/16	425	525	15/16	625	725	825	925
	1-1/4	426	526	1	626	726	826	926
	1-5/16	427	527	1-1/16	627	727	827	927
	1-3/8	428	528	1-1/8	628	728	828	928
	1-7/16	429	529	1-3/16	629	729	829	929
	1-1/2	430	530	1-1/4	630	730	830	930
	1-9/16	431	531	1-5/16	631	731	831	931
	1-5/8	432	532	1-3/8	632	732	832	932
	1-11/16	433	533	1-7/16	633	733	833	933
	1-3/4	434	534	1-1/2	634	734	834	934
	1-13/16	435	535	1-9/16	635	735	835	935
	1-7/8	436	536	1-5/8	636	736	836	936
	1-15/16	437	537	1-11/16	637	737	837	937
2	438	538	1-3/4	638	738	838	938	

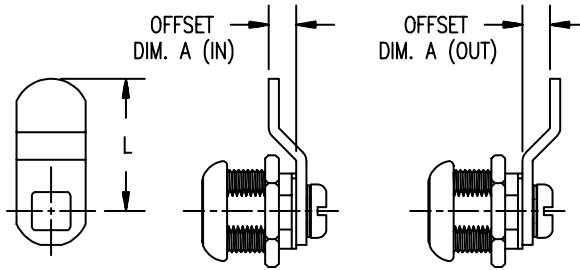


CAMS

DISC TUMBLER CAM LOCKS 45° OFFSET & 45° OFFSET HOOK

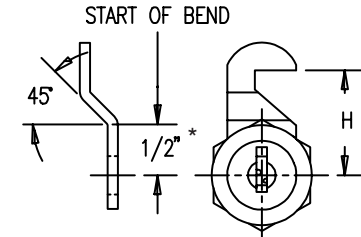
For special purpose or custom cams not illustrated in the catalog, please call for assistance. Our engineering staff is available for consultation and design of any cam forms according to your required specifications.

OFFSET CAMS



All rotations available

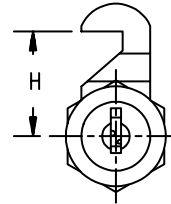
HOOK RIGHT



* 460/560 CAM HAS SPECIAL 7/16" DIMENSION TO START OF BEND

Rotations available:
C-D-J-K-Q-R-W-X-FT-M-Z

HOOK LEFT



Rotations available:
A-B-G-H-N-P-U-V-E-L-S-Y

OFFSET DIM. A	"L" DIM.	IN	OUT	H DIM.	IN	OUT	IN	OUT
3/16"	7/8	440	540					
	15/16	441	541					
	1	442	542					
	1-1/16	443	543	13/16	643	743	843	943
	1-1/8	444	544	7/8	644	744	844	944
	1-3/16	445	545	15/16	645	745	845	945
	1-1/4	446	546	1	646	746	846	946
	1-5/16	447	547	1-1/16	647	747	847	947
	1-3/8	448	548	1-1/8	648	748	848	948
	1-7/16	449	549	1-3/16	649	749	849	949
	1-1/2	450	550	1-1/4	650	750	850	950
	1-9/16	451	551	1-5/16	651	751	851	951
	1-5/8	452	552	1-3/8	652	752	852	952
	1-11/16	453	553	1-7/16	653	753	853	953
	1-3/4	454	554	1-1/2	654	754	854	954
	1-13/16	455	555	1-9/16	655	755	855	955
	1-7/8	456	556	1-5/8	656	756	856	956
	1-15/16	457	557	1-11/16	657	757	857	957
	2	458	558	1-3/4	658	758	858	958
	1/4"	7/8	460 *	560 *				
15/16		461	561					
1		462	562					
1-1/16		463	563	13/16	663	763	863	963
1-1/8		464	564	7/8	664	764	864	964
1-3/16		465	565	15/16	665	765	865	965
1-1/4		466	566	1	666	766	866	966
1-5/16		467	567	1-1/16	667	767	867	967
1-3/8		468	568	1-1/8	668	768	868	968
1-7/16		469	569	1-3/16	669	769	869	969
1-1/2		470	570	1-1/4	670	770	870	970
1-9/16		471	571	1-5/16	671	771	871	971
1-5/8		472	572	1-3/8	672	772	872	972
1-11/16		473	573	1-7/16	673	773	873	973
1-3/4		474	574	1-1/2	674	774	874	974
1-13/16		475	575	1-9/16	675	775	875	975
1-7/8		476	576	1-5/8	676	776	876	976
1-15/16		477	577	1-11/16	677	777	877	977
2		478	578	1-3/4	678	778	878	978

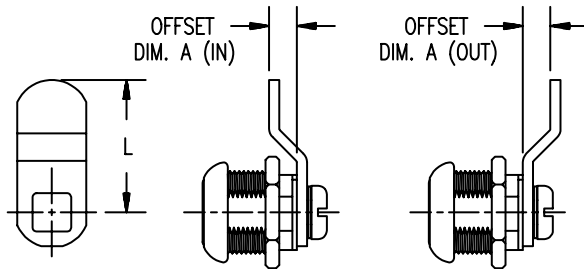


CAMS

DISC TUMBLER CAM LOCKS 45° OFFSET & 45° OFFSET HOOK

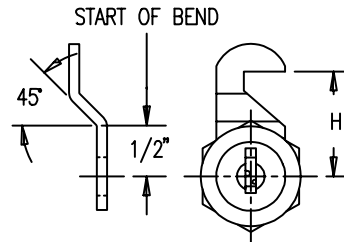
For special purpose or custom cams not illustrated in the catalog, please call for assistance. Our engineering staff is available for consultation and design of any cam forms according to your required specifications.

OFFSET CAMS



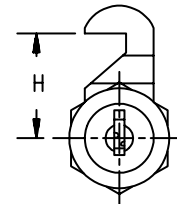
All rotations available

HOOK RIGHT



Rotations available:
C-D-J-K-Q-R-W-X-F-T-M-Z

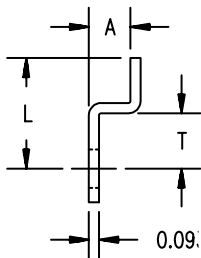
HOOK LEFT



Rotations available:
A-B-G-H-N-P-U-V-E-L-S-Y

OFFSET DIM. A	"L" DIM.	IN	OUT	H DIM.	IN	OUT	IN	OUT
3/8"	1-1/16	483	583					
	1-1/8	484	584					
	1-3/16	485	585					
	1-1/4	486	586	1	686	786	886	986
	1-5/16	487	587	1-1/16	687	787	887	987
	1-3/8	488	588	1-1/8	688	788	888	988
	1-7/16	489	589	1-3/16	689	789	889	989
	1-1/2	490	590	1-1/4	690	790	890	990
	1-9/16	491	591	1-5/16	691	791	891	991
	1-5/8	492	592	1-3/8	692	792	892	992
	1-11/16	493	593	1-7/16	693	793	893	993
	1-3/4	494	594	1-1/2	694	794	894	994
	1-13/16	495	595	1-9/16	695	795	895	995
	1-7/8	496	596	1-5/8	696	796	896	996
	1-15/16	497	597	1-11/16	697	797	897	997
	2	498	598	1-3/4	698	798	898	998

Z-BEND 90° OFFSET



The following is a list of available tooling with a given "A" dimension, which is a fixed dimension on that tool. Dimensions "T" and "L" are variable and must be specified.

A	SPECIFY	
.150	T	L
.218	T	L
.250	T	L
.281	T	L
.300	T	L
.312	T	L

A	SPECIFY	
.340	T	L
.350	T	L
.375	T	L
.500	T	L
.562	T	L
.625	T	L

A	SPECIFY	
.687	T	L
.750	T	L
.780	T	L
1.040	T	L
1.250	T	L
1.425	T	L

If the required "A" dimension is other than the available tooling on the above chart, specify all three dimensions "A", "T", & "L", a service representative will assist in providing the exact requirement or best alternative.



ROTATIONS

Flats on shell are parallel to keyway in Locked Position. In all locked positions, key biting is up at 12 o'clock. Please specify if shell stop is at 12 o'clock or 6 o'clock or indifferent

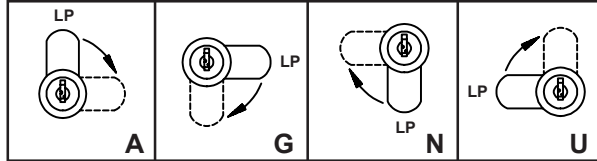
CAM POSITIONING 90° & 180° ROTATION

LP - LOCKED POSITION

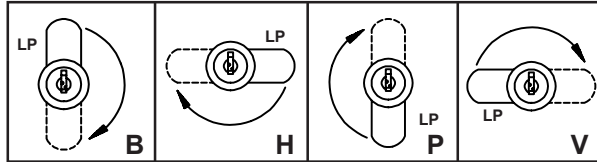
STRAIGHT & BENT CAMS

KEY REMOVABLE IN LOCKED AND UNLOCKED POSITIONS

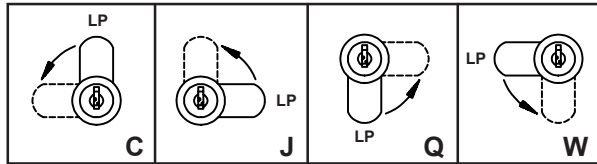
90° CLOCKWISE



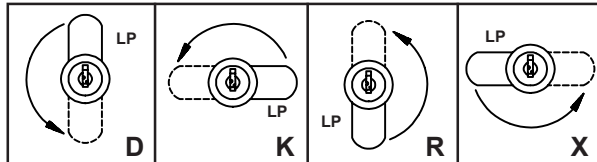
180° CLOCKWISE



90° COUNTER CLOCKWISE

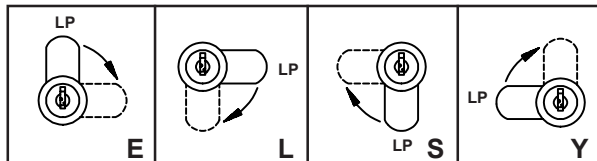


180° COUNTER CLOCKWISE

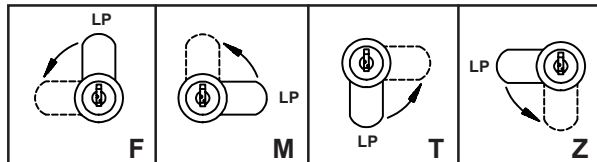


KEY REMOVABLE IN LOCKED POSITION ONLY

90° CLOCKWISE



90° COUNTER CLOCKWISE



For custom rotation and orientations not shown

Send drawing, sketch, or sample to us for accurate referencing.

- Include rotations other than 90° & 180°
- Cam positioning other than 12, 3, 6, 9 o'clock
- Key biting insertion other than 12 o'clock in the locked position
- Lock shells with no flats

ROTATIONS

Flats on shell are parallel to keyway in Locked Position. In all locked positions, key biting is up at 12 o'clock. Please specify if shell stop is at 12 o'clock or 6 o'clock or indifferent

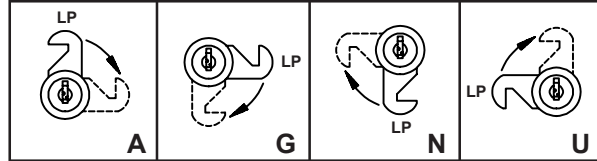
CAM POSITIONING 90° & 180° ROTATION

LP - LOCKED POSITION

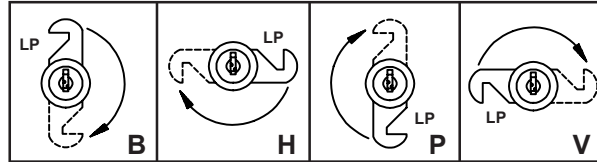
HOOK CAMS - HOOK STRAIGHT/OFFSET

KEY REMOVABLE IN LOCKED AND UNLOCKED POSITIONS

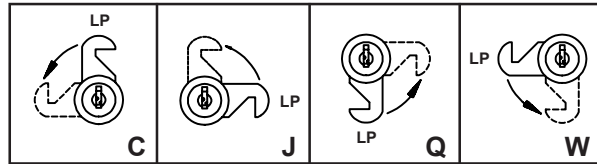
90° CLOCKWISE HOOK LEFT



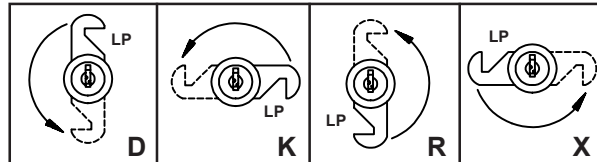
180° CLOCKWISE HOOK LEFT



90° COUNTER CLOCKWISE HOOK RIGHT

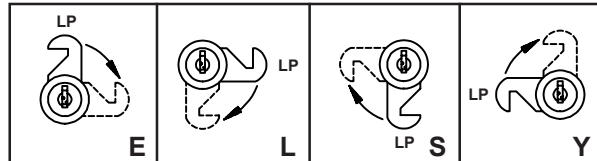


180° COUNTER CLOCKWISE HOOK RIGHT

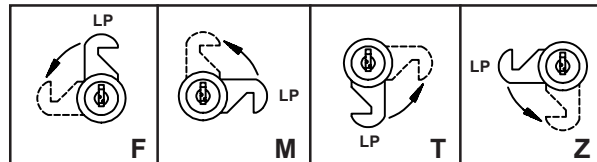


KEY REMOVABLE IN LOCKED POSITION ONLY

90° CLOCKWISE HOOK LEFT



90° COUNTER CLOCKWISE HOOK RIGHT



For custom rotation and orientations not shown

Send drawing, sketch, or sample to us for accurate referencing.

- Include rotations other than 90° & 180°
- Cam positioning other than 12, 3, 6, 9 o'clock
- Key biting insertion other than 12 o'clock in the locked position
- Lock shells with no flats



PLATING & FINISHING SPECIFICATIONS

On Die Cast ZA3, applied on Cores, Shells, & Misc. Parts

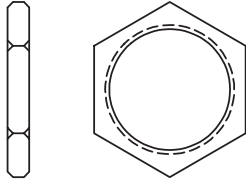
0701	US2C	ZINC/BLUE CHROMATE	NON COSMETIC	AVERAGE PROTECTION
0700		ZINC/YELLOW CHROMATE	COSMETIC	NO PROTECTION
0605		CLEAR CHROMATE	NON COSMETIC	GOOD PROTECTION
E-511		BLACK DIP	NON COSMETIC	NO PROTECTION
0516		BLACK IMMERSION WITH WAX	COSMETIC	AVERAGE PROTECTION
0400	US14	COPPER/NICKEL	COSMETIC	GOOD PROTECTION
0101		COPPER/NICKEL/CHROME	COSMETIC	GOOD PROTECTION
0103	US260	DULL CHROME	COSMETIC	GOOD PROTECTION
0200	US4	DULL BRASS	COSMETIC	NO PROTECTION
0505	US204	STATUARY BRASS (ANTIQUÉ)	COSMETIC	AVERAGE PROTECTION
E543	US5	ANTIQUÉ BRASS	COSMETIC	AVERAGE PROTECTION
0520		BLACK IMMERSION, HAND FINISHED	COSMETIC	AVERAGE PROTECTION
0401	US14A	POLISHED NICKEL	COSMETIC	AVERAGE PROTECTION



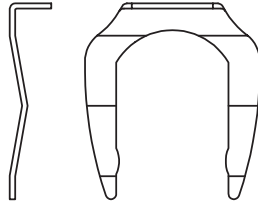
HARDWARE & ACCESSORIES

Tolerances .XXX ±.005 .XX ± .010 Fractions ± 1/64

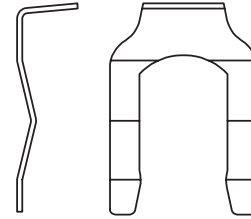
Metric: multiply decimal X 25.4 to obtain mm.



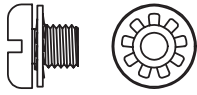
3/4-24 Hex Mounting Nut
V11003-1 - 1/8 Thick
V11003-3 - 5/32 Thick
 Application: Locks with threaded shells



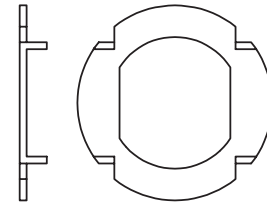
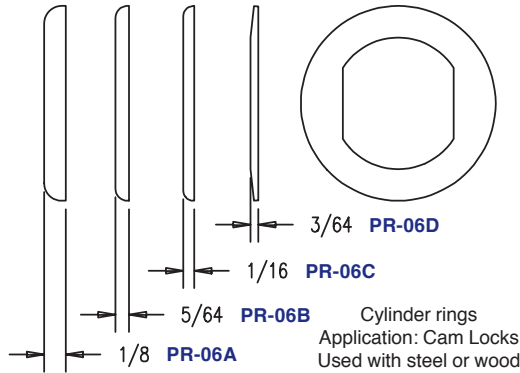
Spring Clip
M11011-1
 Application: Locks with clip slot shells



Spring Clip
PR-17.020 - .020 Thick
PR-17.030 - .030 Thick
 Application: Mail Box Locks



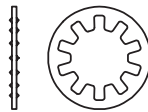
1/4-28 Sems Screw
V11004-1
 Application: Cam Locks



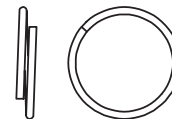
Spur Washer
PR-07/M11012-4
 Application: Cam Locks
 Used with wood



5/16-24 Hex Nut
ULP-14D
 Application: Cam Locks



5/16 Internal tooth washer
ULP-14A
 Application: Cam Locks



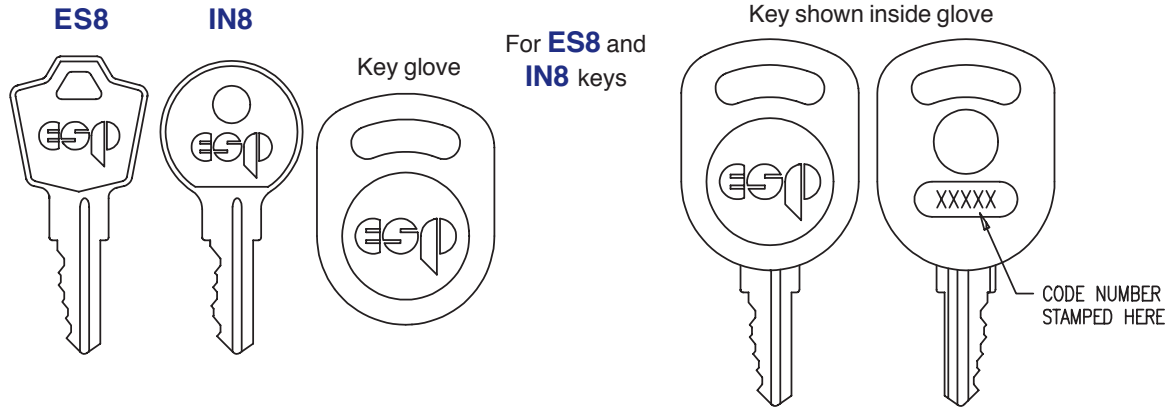
Key Ring
PR-10 - 5/8 DIA.
PR-10A - 7/8 DIA.
 Application: All types of locks
 with 2 or more keys





HARDWARE & ACCESSORIES


Tolerances .XXX ±.005 .XX ± .010 Fractions ± 1/64

Metric: multiply decimal X 25.4 to obtain mm.




 #5 X 5/8 Wood Screw
ULP-19
 Application: WDL & OBL Locks


 #5-40 Flat Head Machine Screw
ULP-97
 Application: File Cabinet Locks


 3/32 X 1/2 Roll Pin
ULP-41
 Application: File Cabinet Locks