

METAL DRAWER LOCK

DISC TUMBLER-DIE CAST

T585NC SERIES

SIZE 19/32

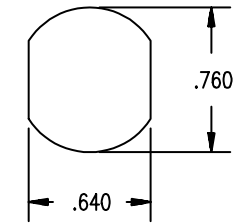
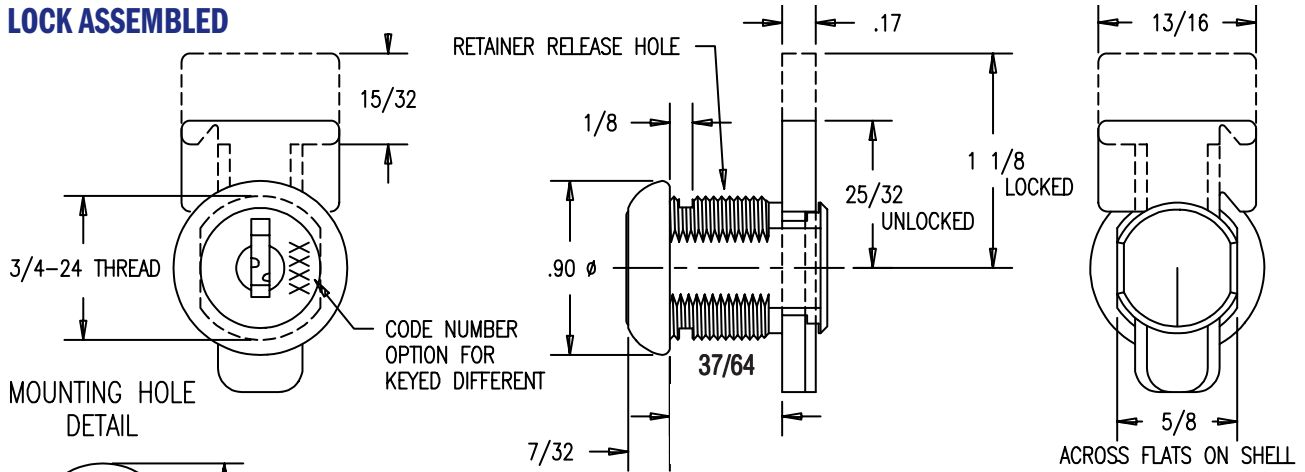
T-BOLT LOCKING
NUT OR CLIP MOUNTING

INSTAL-A-CORE OR
STATIONARY CORE
NO DRIVER INSERT

Tolerances .XXX ±.005 .XX ± .010 Fractions ± 1/64

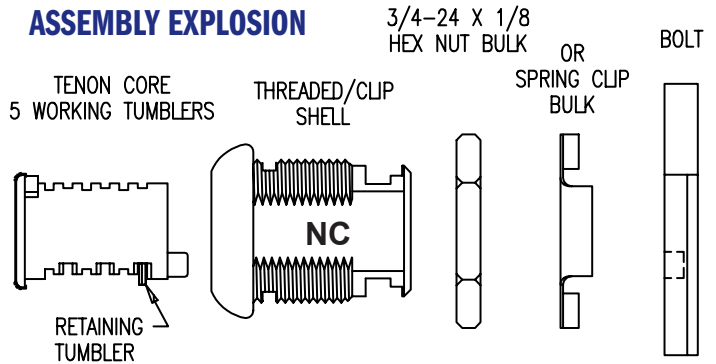
Metric: multiply decimal X 25.4 to obtain mm.

LOCK ASSEMBLED



ON CLIP SLOT VERSION, NOTCH ALLOWS LOCK TO BE SHIPPED AND INSTALLED COMPLETELY ASSEMBLED

ASSEMBLY EXPLOSION



KEYING:

- 5 Disc tumblers, 1 retainer
- Keyed alike, keyed different master keyed.
- 2 brass keys, rung

OPERATION:

- 180° Key turn
- Key is removable in locked and unlocked positions

STANDARD LOCK:

- Stainless steel scalp on shell & core
- Lock is shipped unassembled Shell, core, bolt, mounting hex or spring clip shipped bulk

OPTIONS:

- Key number on face of core
- No scalp on core and shell
- Custom finishes on core and shell, see page 26
- Variety of bolts

DISASSEMBLY OF LOCK (STATIONARY CORE):

To remove the core from the shell, the lock must be in the locked position and the key should be inserted into the core. Insert a 1/16" diameter wire into the retainer release hole and simultaneously depress the retaining tumbler and pull the core out of the shell.

NOTE:

Our patented INSTAL-A-CORE feature can greatly simplify the above assembly and disassembly procedures.

HOW TO ORDER

XT585

N

INSTAL-A-CORE

CATALOG SERIES

NUT MOUNTING

CORE IS INSERTED OR REMOVED WITH A CONTROL KEY

Example: XT585N - 19/32" Metal drawer lock, nut mounting, standard bolt assembly, instal-a-core.

